

CRAFT DISTON

Biscayne Series Hinged Shower Enclosure

INSTALLATION INSTRUCTIONS

Model Numbers

SHOWER ENCLOSURE
742M

Hinge door with (2) in-line panels

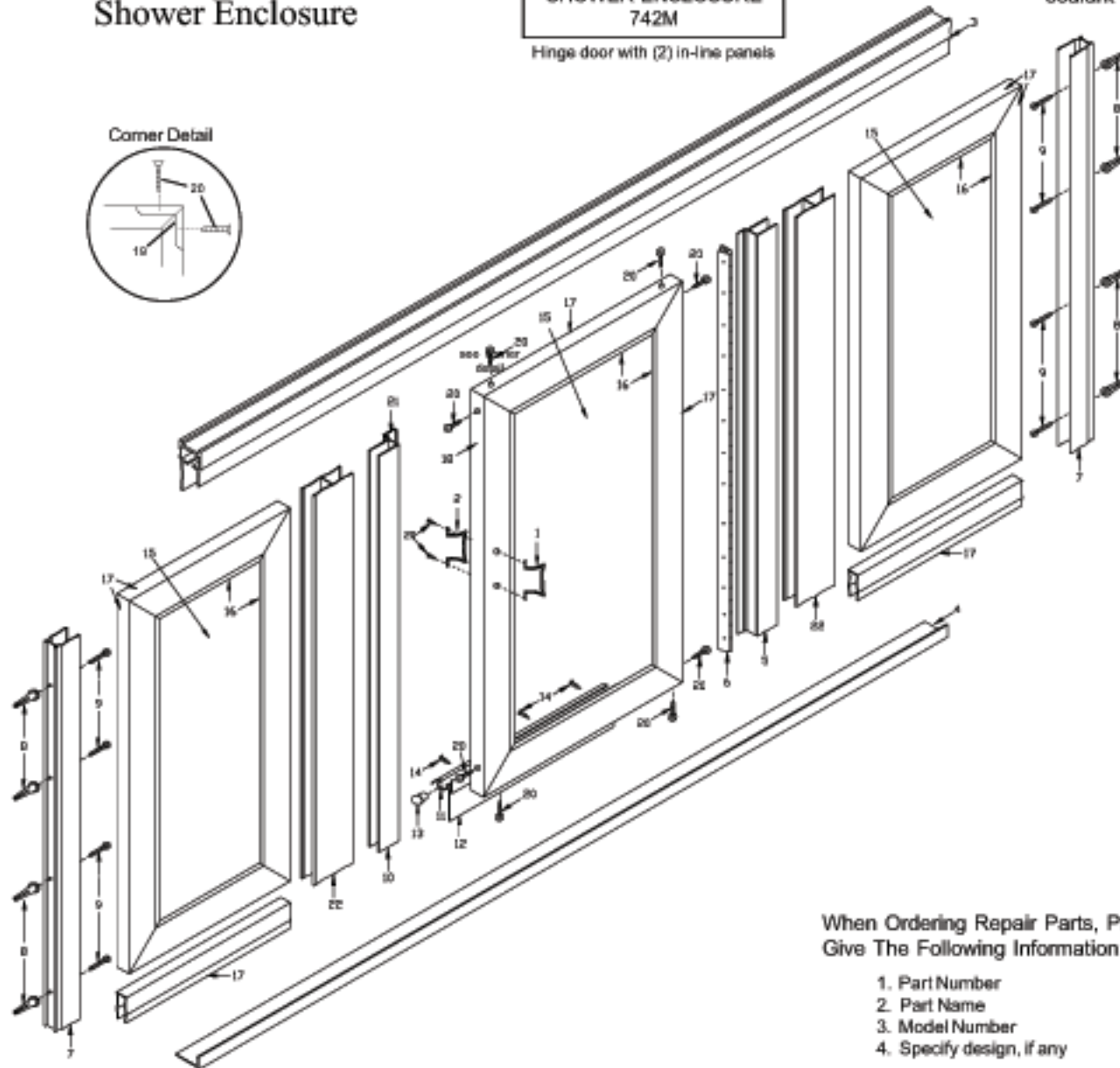
To install your shower enclosure, you will need the following:

- level
- 3/32", 1/8" and 3/16" drill bits
- phillips screwdriver
- sealant

GLAZED
includes glass

KD
does not
include glass

Corner Detail

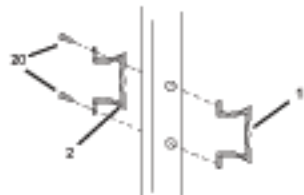


NOTE: K.D. units include all metal parts and hardware, but do not include glass. Glass size equals frame size less 1 1/2" in height and width.

Description	Qty.	Part #	
1. Outside (male) door handle	1	8153	
2. Inside (female) door handle	1	8149	
3. Header	1	SSI-44	
4. Threshold	1	SSI-113	
5. Hinge jamb	1	SSI-86	
6. Hinge	1	675	
7. Wall channels	2	SSI-97	
8. Wall anchors	8	NO240	
9. #8 x 1" PH SMS	6	300	
10. Strike jamb	1	SSI-141	
11. Drip channel	1	CFM-49	
12. Drip channel vinyl	1	V1596	
13. Drip channel plug	1	NO312	
14. #6 x 3/8" PH SMS	31	206	
15. Tempered glass (glass units)	3		
16. Glazing vinyl	87 ft.		
17. Glass frames	13	SSI-76	
18. Magnetic door frame	1	CFM-140	
19. Corner angles	12	SS252	
20. #8-32 x 1/2" FH SMS	26	301	
21. Magnetic strip	1	M-1354	
22. H mullions	2	SSI-85	

When Ordering Repair Parts, Please Give The Following Information:

1. Part Number
2. Part Name
3. Model Number
4. Specify design, if any

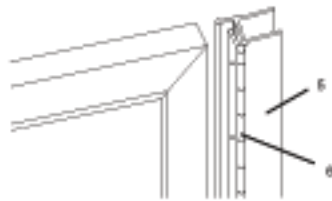


Step 1

MODEL 742M

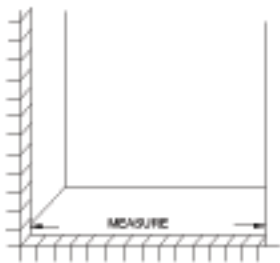
Assemble door handles

- attach outside (male) door handle (1) and inside (female) door handle (2) to door with two #8-32 x 1/2" flat head machine screws (20).
- set door assembly aside. (The inside door handle should be placed on the magnet side of the door.)



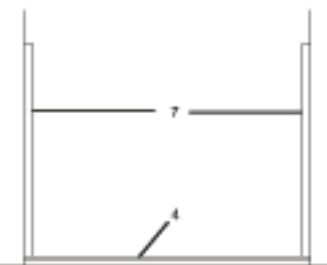
Step 2

- this door is reversible and can swing to the right or left. (A right-swing door is shown.) Decide which way you wish your door to swing.



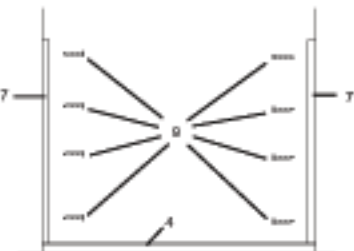
Step 3

- measure the wall to wall opening of the shower curb.
- cut bottom threshold (4) 1/16" less than opening width.
- Note:** Make sure high side of threshold is to the outside of shower.



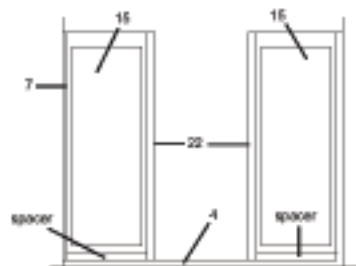
Step 4

- position wall channels (7) on threshold (4), making sure threshold is centered on curb.
- plumb wall channels and mark installation holes on wall.
- remove all parts
- for ceramic tile installation, use a 3/16" masonry bit for drilling installation holes.
- install plastic wall anchors (8).
- for fiberglass installation, use a 1/8" drill bit for drilling installation holes.



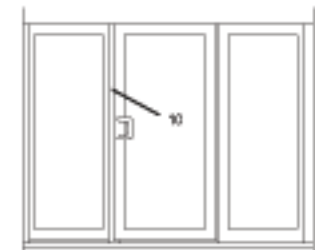
Step 5

- apply a bead of sealant on each end of curb under threshold location.
- replace threshold (4) on center of curb.
- replace wall channels (7) in previous location.
- secure wall channels to wall with #8 x 1" pan head sheet metal screws (9).
- apply a liberal amount of sealant inside wall channels where wall channels meet threshold



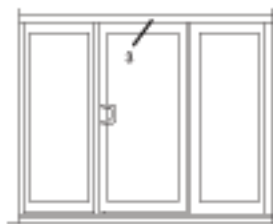
Step 6

- set glass panels (15) into wall channels (7) and sill channels. Do not secure.
- place H mullions (22) on to glass panels
- place strike jamb (10) into H mullion.



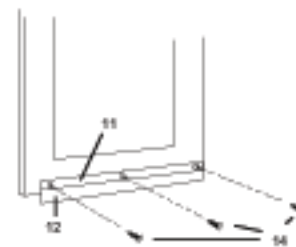
Step 7

- position door hinge jamb into opposite H mullion (22).
- close door against strike jamb (10) making sure door is flush against jamb.
- measure the wall to wall opening across top of unit.
- cut header (3) 1/16" less than opening
- place header over wall channels.



Step 8

- adjust unit to opening.
- secure adjustable strike jamb, hinge jamb, and panels by drilling 3/32" in back of wall channels and H mullions.
- secure using three #8 x 3/8" pan head sheet metal screws (14).
- secure header to wall channels and H mullion.
- NOTE:** If magnet does not pull door shut, reverse strike jamb magnet. Groove in magnets should NOT match.



Step 9

- cut drip channel (11) 1/4" less than panel width.
- notch drip channel 3/4" at hinge side to allow channel to overlap hinge jamb.
- using a file, round off both lower corners of drip channel.
- insert drip channel vinyl (12) into drip channel (11) and trim to size.
- insert plastic drip channel plug (13) into end of drip channel.
- with door closed, position drip channel on inside of door with a slope to the hinge side.
- mark the location.
- drill three 3/32" holes from drip channel into door.
- secure with three #6 x 3/8" pan head machine screws (14).
- IMPORTANT:** holes must be drilled a minimum of 3/8" below exposed glass.

Step 10

- seal the inside and outside of the unit at any point unit meets wall or curb. Seal between outside of bottom spacer and high side of threshold.