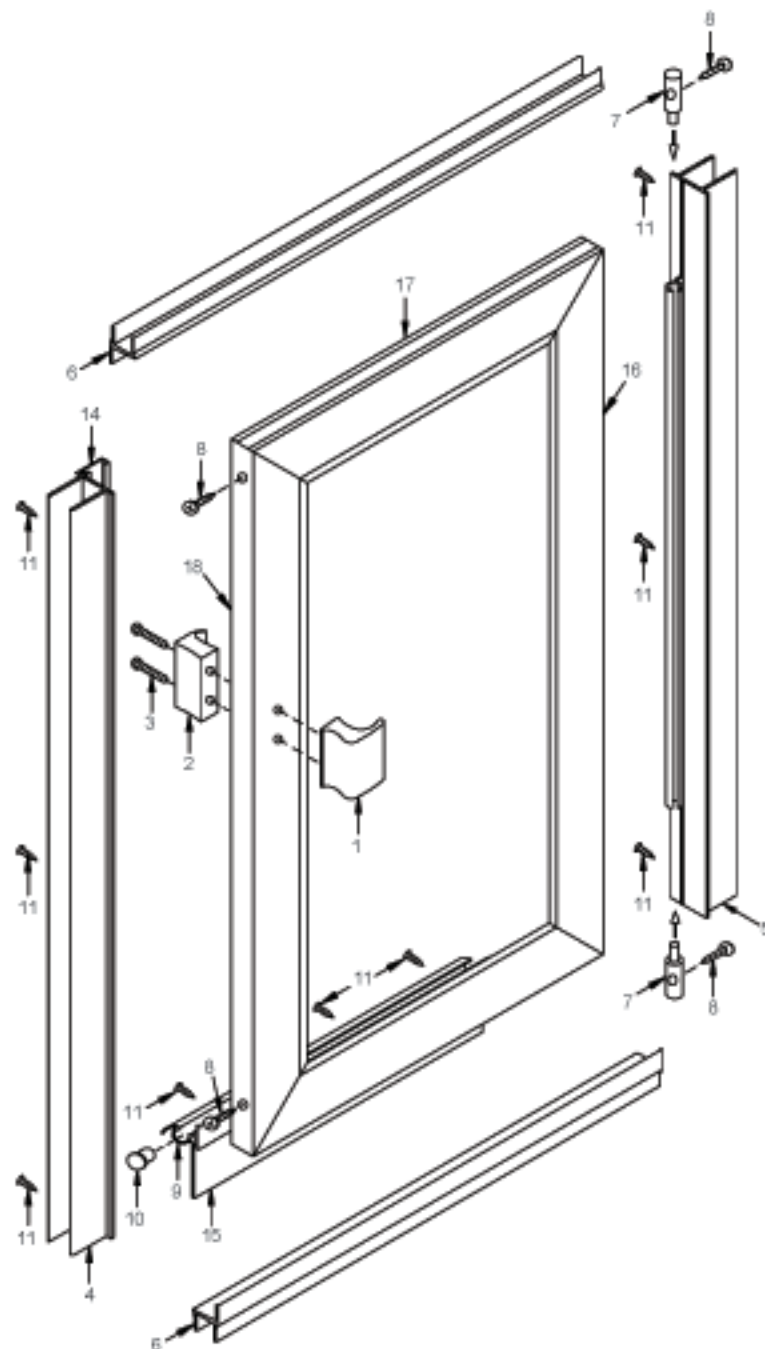


CRAFT DISTON

Model 801 / 802 Quikstik Door Kit



NOTE: all doors are completely reversible and may be installed hinge-left or hinge-right. These illustrations show a hinge-right door.

To install your shower enclosure, you will need the following:

- Level
- 3/32", 9/64" and 3/16" Drill Bits
- Phillips Screwdriver
- Sealant
- Hack Saw

DESCRIPTION	QTY.	PART#	
1. Outside door handle	1	QS3439	
2. Inside door handle	1	QS3440	
3. #6-32 x 1 3/4" FHMS	2	903	
4. Strike jamb	1	CFM-954	
5. Hinge jamb	1	CFM-908	
6. Thresholds	2	CFM-902	
7. Hinge pins	2	EHB-1	
8. #7 x 1 1/4" FH SMS	4	7125	
9. Drip channel	1	CFM-49	
10. Drip channel plug	1	DP-312	
11. #5 x 1/2" PH SMS	11	310	
12. Wall anchors	8	NO240	
13. #8 x 1 1/2" CH SMS	8	902	
14. Magnetic strips	2	M1354	
15. Drip channel vinyl	1	V1566	
16. Hinge glass frame	1	CFM-907	
17. Horizontal glass frames	2	CFM-910	
18. Magnetic glass frame	1	CFM-983	
19. Glazing vinyl	17'		

When ordering repair parts, give the following information:

1. Part Number
2. Part Name
3. Model Number
4. Specify design, if any